



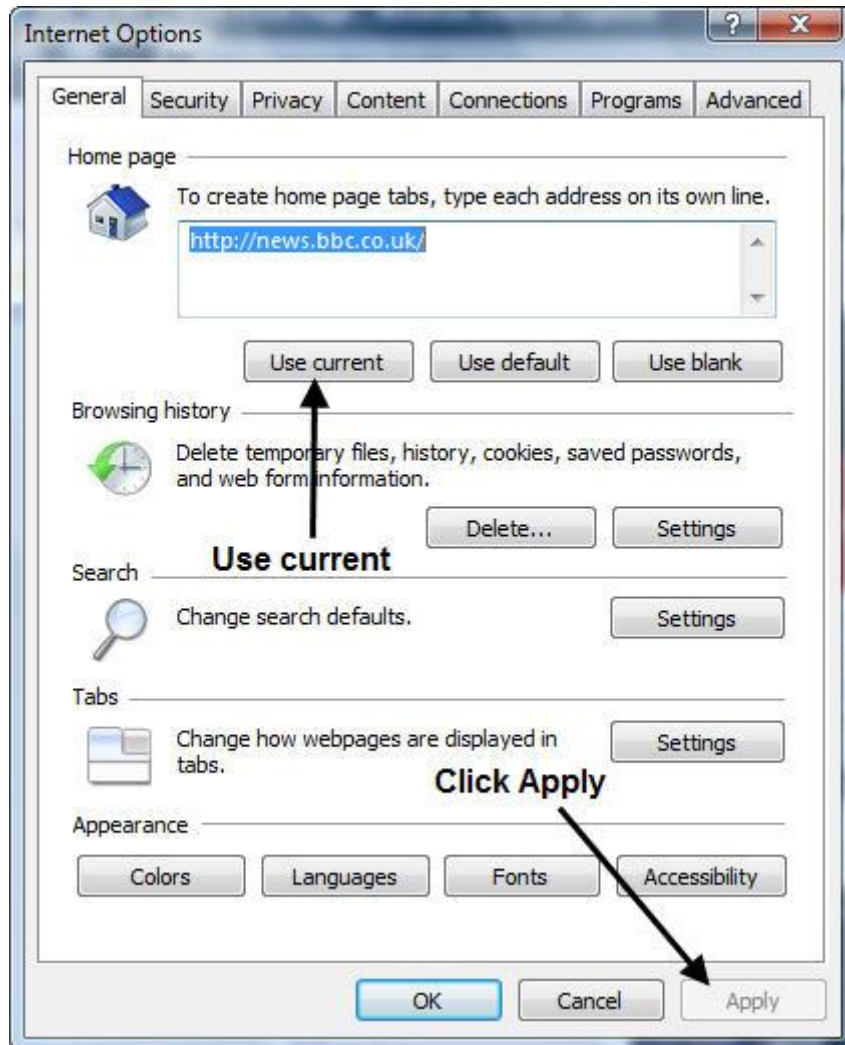
## **How to set up your own home page**

The first time you open your web browser you will find that the first page displayed is almost certainly the main page featuring your Internet Service Provider's website. This is what is known as your 'home' page.

After a while you begin to find it rather tedious being presented with a page that you are not really interested in so this tutorial will help you to set up a page that has more relevance for you.

First of all, decide on what page you would like to appear when the browser is first launched. Some people like to have the main Google search page, others prefer to select the BBC News page and still more want to display pages relevant to their main hobby whether it is woodworking, scale modelling or line dancing. The choice is up to you.

Once you have decided on your choice go to that page and then click on Tools on the Menu bar. From the dropdown menu, select Internet Options when you will see a window similar to that shown below



In this example I had raised the BBC news page to become my home page and the web address - known as a URL – has been inserted ready for me to click on the Use Current box. Then click on Apply and finally click on OK. That's it! The BBC news page is now set as my home page and will be displayed each time I open the Internet browser.

You will also notice that there is a facility for the browser to open with a simple blank page if that is what you prefer.